

SATO
Powered On Site /



FX3-LX

An intuitive 3-inch label printer that
seamlessly adapts to your business



Made for
iPhone | iPad | iPod



red dot award 2017
winner

satoeurope.com

FX3-LX



Effortless label printing for complex operations

The award-winning SATO FX3-LX is a flexible, next-generation label printer that is suited to a wide range of industries due to its highly-customisable application technology and ability to adapt to its environment. The device's intuitive printing applications are easily accessed via a 7-inch TFT full colour touch screen, which offers users the familiar feel of using a smartphone or tablet.

The FX3-LX's Application Enabled Printing (AEP) platform allows the device to be used as a PC-less, online or standalone printer, giving users full autonomy when printing labels for sectors including Food, Retail and Manufacturing and Logistics. The device is compatible with SATO Online Services (SOS) – a cloud-based proactive maintenance solution that provides prompt support and eliminates unnecessary operational downtime, whatever the application.

Key Benefits

- Improved efficiency, productivity and reduced costs
- Optimised applications (via SATO and SATO partners) for your unique business needs
- Reduced desk space demands. Wall-mounted option available. Portability for hand-held or trolley use
- Caters for multi-lingual clients and workforces with 47 printable languages and 31 user display languages
- Compatible with eco-friendly linerless labels
- Branded and application-focused label designs from SATO's own design team and brand-new production facilities
- Supports compliance with food regulations
- Multi-purpose asset: label printer, operator video training tool, compliance monitoring and management tool
- SATO Online Services (SOS) remote, proactive maintenance solution for prompt support, wear part notification and reporting
- Easy database update by USB/LAN/WLAN

“ The SATO FX3-LX's unique user benefits are industry leading. Every application is completely tailored to the user process, in line with the demands of their sector, making it the most flexible portable label printer in its class. ”

Ryutaro Kotaki, SATO President and CEO



FX3-LX for the Food Industry

Rely on food-safe features for peace of mind

FX3-LX has the ability to automatically calculate and print best-before and use-by dates, allergens and secondary shelf-life compliance information for individual products and ingredients, based on its internal product database. The FX3-LX database is easily updated with data from a server via a USB memory stick, USB and LAN PC connection or automatically via WLAN, ensuring data accuracy is maintained at all times. This in turn helps to reduce food waste due to improper labelling. In addition, label usage tracking is also a feature of the FX3-LX, allowing the user to verify whether food safety procedures are being adhered to.

Reduce costs & save space

The FX3-LX's PC-less printing feature makes it ideal for use by a wide range of food industry sectors. From Quick Service Restaurants to Corporate, Hospitality and Manufacturing, businesses in the food industry can reduce costs and save space by moving the portable device from the kitchen or back-office to the service floor, as and when required. FX3-LX prints high quality (305dpi), durable 3-inch labels as standard, without the need for a PC.

Adapted to hygiene environments

- ✓ Easy-clean, anti-bacterial casing
- ✓ Splash proof (IPx2)
- ✓ Slip resistant
- ✓ Option to wall mount
- ✓ Can be operated with gloves
- ✓ Video training feature





FX3-LX for the Retail Industry

Print on demand, in any location

For the convenience of retail assistants, the FX3-LX has a USB-A interface, which allows peripheral devices (such as scanners and keyboards) to be connected for all shop-floor and back-of-store operations. Hand scanners, for example, can be connected via USB or Bluetooth, making it easy and fast to retrieve information and print from product databases. This means less time is spent on merchandising and more time is focused on customer service.

Remove human error with automatic calculations

Unlike hand labelling, where the retail assistant would need to work out discounts and keep a track of discounted items manually, the FX3-LX automatically calculates sales tax and price discounts to avoid human error. The device keeps track of discounted items and allows corrective actions to be taken, as and when required. The FX3-LX's high-resolution print is suited to production of shelf-edge labels and promotional quality print for discount and high-end outlets alike.

Markdown labelling, made easy



Scan Barcode

Enter Discount

Check Preview & Enter Quantity

Print Labels

Fully customised label formats and designs and automatic calculations to reduce errors



FX3-LX for the Manufacturing & Logistics Industries

Access accurate data, whatever your location

The multi-functional nature of the FX3-LX makes it perfectly suited to manufacturing and logistics environments. Accurate data can be efficiently accessed in multiple sites and geographies, allowing operatives to label items correctly. The ability to label goods with data supplied direct from an up-to-date, portable database is of benefit to many applications, including:

Key Benefits

- Save space with PC-less printing
- Connect peripheral devices (such as scanners and scales) with user-friendly, multi-interface operation
- Easily adapt to existing user systems

Applications

- Put-away labelling
- Raw material labelling
- Pick, pack and ship labelling
- Returns labelling
- Cross-docking re-labelling and dispatch addressing

In all instances, the easy-to-operate FX3-LX requires less manual input and less internal training than traditional labelling methods, making significant labour savings for small and large-scale enterprises. Put-away labelling, for example, requires less manual input for label printing on inner-box labels due to the user's access to an up-to-date product database. Without the FX3-LX, adding labels to inner boxes, rather than just the outer carton, is a time-consuming operation that often requires additional training.

Robust design for challenging environments

The portable FX3-LX is splash proof (IPx2), slip resistant and IK06 (mechanical impact) compliant.



Saves resources

Customised training videos are available before printing, with audio instruction and label previews, to help minimise label waste and prevent operational issues.





Optional Accessories



Lithium-ion Battery

14.4V, 1950 mAh
Smart battery: shows remaining battery % and number of charging cycles



Cutter Kit

Supports both labels and linerless labels
Supports the cutting of adhesive



Battery Mount Kit

Required for battery operation



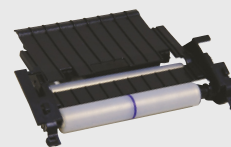
Partial Cutter Kit

Suitable for receipt printing



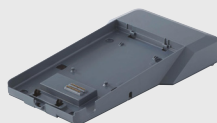
Battery Charger

1bay battery charger



Linerless Kit

Supports linerless tear-off and linerless cutter both with a label taken sensor



Cradle Kit

Easy battery charging
Hides and protects the AC adapter from dropping or submersion



Wall Mount Kit

Space-saving solution
Easy installation
Angle adjustment: 0 – 25 degrees
(printer not included)



WLAN/Bluetooth Kit

WLAN: IEEE802.11 a/b/g/n/ac, Wifi certified
Bluetooth: Version 4.1, MFi certified

FX3-LX Technical Specification

PRINTING SPECIFICATION		FX3-LX	
Printing Method		Direct Thermal	
Print Resolution, dots/mm (dpi)		12 dot/mm (305dpi)	
Max. Print Area	Width, mm (inch)	80 mm (3.15")	
	Length, mm (inch)	500 mm (19.69")	
Max. Print Speed, mm/sec (ips)		AC adapter operation: 152mm/sec (6 ips) Battery operation: 101mm/sec (4 ips)	
Printer Mode		Continuous, Tear-off, Cutter, Partial Cutter, Dispenser, Linerless Tear-off, Linerless Cutter	
CONSUMABLES SPECIFICATION. For optimal print quality SATO recommends the use of SATO Genuine Consumables			
Sensor Type		Gap (Transmissive) and I-Mark (Reflective)	
Media Type		Roll (Continuous, Die-cut, linerless), Fan-fold	
Media Thickness (Label and Liner)		0.14 mm (0.0055") ~ 0.19 mm (0.0075")	
Label Roll	Diameter	105 mm (4.13") on 25 mm (1") ID Core. 90 mm (3.54") on 40 mm (1.5") ID Core	
	Wind Direction	Face-in/ Face-out, No setting change required	
Label Size (Label and Liner)	Continuous	Width	28 mm (1.10") ~ 85 mm (3.35")
		Length	19 mm (0.75") ~ 503 mm (19.80")
	Tear Off	Width	28 mm (1.10") ~ 85 mm (3.35")
		Length	19 mm (0.75") ~ 503 mm (19.80")
	Cutter	Width	28 mm (1.10") ~ 85 mm (3.35")
		Length	19 mm (0.75") ~ 503 mm (19.80")
	Dispenser	Width	28 mm (1.10") ~ 85 mm (3.35")
		Length	19 mm (0.75") ~ 503 mm (19.80")
	Linerless	Width	32 mm (1.26") ~ 82 mm (3.23")
		Length	20 mm (0.79") ~ 500 mm (19.69")
	Linerless Cutter	Width	32 mm (1.26") ~ 82 mm (3.23")
		Length	45 mm (1.77") ~ 500 mm (19.69")
USER FRIENDLY SUPPORT TOOLS			
Display Panel		7" TFT Full Color touch screen LCD (480 x 800)	
Large Status LED		Blue/ Red	
Multi National Language Support		47 Languages and Scalable Print Fonts. 31 Languages for LCD Menu	
Operation and customer videos		14 preset videos including media loading, parts replacement, option installation, cleaning etc. 1 GB space available for storing and playing customer videos with sound. (onboard speaker)	
Peripheral devices		Connect peripheral devices like scanner, keypad and keyboard directly to the printer for data input	
Remote Maintenance		SNMP Ver. 3, HTTPs	
Preventive Maintenance		SOS (SATO Online Services)	
FONTS / SYMBOLOGIES			
Fonts	Standard Fonts	Bitmap fonts: 10 SATO fonts, 4 POP fonts. Scalable fonts: 39 fonts. Multi-national language support (47 languages/Unicode), Single and Double byte fonts (Korean, Chinese, Japanese)	
Barcodes	1D Barcode	Code 39, Code 93, Code 128, CODABAR (NW-7), EAN 8/13, GS-1 Databar, GS-1 128 (UCC/ EAN 128), Interleaved 2/5, Industrial 2/5, JAN 8/13, Matrix 2/5, MSI, Bookland, Postnet, UPC-A/E, Customer Barcode, Postnet, USPS code	
	2D Barcode	Aztec, PDF 417, Micro PDF, Maxi Code, GS1 Data Matrix, QR Code, Micro QR Code	
	Composite Symbolologies	EAN-8/13 Composite, UPC-A/E Composite, GS1 DataBar, (Composite, Truncated Composite, Stacked Composite, Expanded Stacked Composite, Expanded Composite, Stacked Omnidirectional Composite, Limited Composite), GS1-128 Composite	
INTERFACE CHARACTERISTICS			
	USB + LAN Model	USB 2.0 (Type A) x 3, USB 2.0 (Type B), Ethernet (IPv4/v6), NFC	
	Optional WLAN/Bluetooth kit	Wifi: Wifi Direct IEEE802.11 a/b/g/n/ac, Dual Band, (2.4GHz/ 5GHz) Bluetooth: version 4.1, MFi certified	
Language Emulations		Auto Detect, SBPL, SZPL, SDPL, SIPL, STCL, SEPL	

FX3-LX Technical Specification

OPERATING CHARACTERISTICS		
Power Requirements		Universal Auto-ranging Power Supply, 100-240 VAC +/-10%, 50/60 Hz
Battery		Lithium-ion Smart Battery. 14.4V, 1950 mAh. (Battery run time can be extended by enabling the printer's power saving features; Refer to the operator manual or contact your local SATO provider for details)
Power Saving		Support smart settings including Auto Power Off and Sleep Mode
Dimensions	Standard model	W132 mm x D 225mm x H161mm *Excluding label roll, AC adapter and other options
	Standard model with battery mount kit	W132 mm x D 225mm x H180mm
Weight	Standard model	2.5 kg
	Standard model with battery mount kit	3.0 kg
Standards & Agency Approvals		Noise (EMC) standards: EN55032, EN55024, EN61000-3-2 / 3-3, EN300 330-2 / -1, EN301 489-1 / -3 / -17, FCC Part15 Subpart B, ICES 003. Safety standards: UL60950-1, CSA C22.2 No.60950-1, IEC/EN60950-1. Wireless regulations: FCC Part15 Subpart C/E, ISSED RSS-Gen, ISSED RSS-247, EN 300 328, EN 301 893
Operating environment	Label (excluding dispenser)	0~40°C/ 30~80%RH (non condensing)
	Label (dispenser)	0~35°C/ 30~75%RH (non condensing)
	Linerless	5~35°C/ 30~75%RH (non condensing)
Storage environment		-5~60 °C, 30~90% RH Non-condensing
MISCELLANEOUS		
Compliance		IPx2, IK06, Energy Star, Bluetooth MFi Certification
OPTIONS		
Accessories		Cutter Kit, Partial Cutter Kit, Linerless Kit, WLAN / Bluetooth Kit, Battery Mount Kit, Lithium ion Battery, Battery Charger, Cradle Kit, Wall Mount Kit

For more information, please contact
your local SATO office, or visit:

satoeurope.com